

## Global Reading Challenge: A Rousing Reading Event

More than 2,000 4th and 5th grade students on 286 teams representing 56 schools and 18 school districts participated in the King County Library System's 12th Annual Global Reading Challenge on March 22.

The KCLS Foundation sponsors this fun-filled "Battle of the Books" style program that encourages 4th and 5th graders to work together on teams and challenge other schools to correctly answer questions about ten selected books. Children's Librarians select the titles for a wide range of reading levels especially suited to the interests of young readers. The goal is to encourage students at all reading levels to engage in teamwork while reading some of the best in children's literature.

The final four teams were from Helen Keller Elementary School (Lake Washington School District), Terminal Park Elementary (Auburn School District), Woodridge Elementary (Bellevue School District) and Thorndyke Elementary (Tukwila School District).

This Grand Challenge Event went down to the wire with more than 100 parents and teachers cheering on the teams. The Roaring Readers from Bellevue's Woodridge Elementary School claimed the trophy.



*Grand Challenge winners: The Roaring Readers*

The seven team members held practice sessions during their recess and lunch periods. One student said, "I read books I would never have picked out if it weren't for Global Reading Challenge."

The four finalist teams met guest author Trudi Trueit, who has written more than 80 books for middle grade students. Each student received an autographed copy of her book, *No Girls Allowed (Dogs Okay)*, funded by the KCLS Foundation.



## Dig into Reading!

Summer Reading fun begins June 1! No registration is required to participate in the preschool or school-age program. There are activities, programs and prizes for pre-readers and young readers. Preschool readers who finish by August 31 will be entered to win a stack of books, free passes to the Woodland Park Zoo or a Family Membership to the KidsQuest Museum. School-age readers who finish by August 31 will be entered to win a Sony eReader (one prize per library). The KCLS Foundation is pleased to be a sponsor of the Summer Reading Program. Visit [www.kcls.org/kids/summer](http://www.kcls.org/kids/summer) for more information.

Teens can earn points for prize books and vie for a Kindle Fire and Wii U through an online and in-library summer reading program. Check out the Teen Zone pages on the KCLS web site, [www.kcls.org/teens](http://www.kcls.org/teens) and read your way through summer days.

TEEN SUMMER READING 2013  
**BENEATH THE SURFACE**

# Literary Lions Gala

The 20th Anniversary of the KCLS Foundation's Literary Lions Gala was a glittering event featuring the award-winning keynote author Dennis Lehane, talented Northwest writers, renowned emcee Nancy Pearl and more than 500 guests. The Gala, held March 23 at the Bellevue Hyatt, raised more than \$230,000, which will help fund a variety of programs.

Keynote speaker and bestselling author Dennis Lehane (*Mystic River*, *Shutter Island*, *The Given Day*, *A Drink Before the War*, *Moonlight Mile*, *Gone Baby Gone* and his new book, *Live by Night*) was gracious and funny and he spoke highly of the value and impact of libraries. As a child growing up in a working-class immigrant family, his mother took him to the neighborhood library, then, as a special treat, to the main branch of the Boston Public Library. "Libraries say to any kid, 'you matter, you have worth'. The society you live in - be that represented by your town, its city, its state, the country - cares about you. And they care about you for no other reason than it is right to do so. This in my opinion makes libraries an unequivocal good."

**The 2013 Literary Lions:** Tony Angell, Erica Bauermeister, Bonny Becker, Mackenzie Bezos, Jessi Bloom, Deb Caletti, Megan Chance, Tara Conklin, Amanda Coplin, William Dietrich, Tom Douglas, Robert Dugoni, Jonathan Evison, Kathleen Flenniken, Laurie Frankel, Kristin Hannah, Amy Hatvany, Josh Henderson, Patrick Jennings, Mike Lawson, Richelle Mead, Julia Quinn, Sarah Reichard, Carole Lexa-Schaefer, Paul Schmid, Maria Semple, George Shannon, Jennie Shortridge, Samantha Vamos, Lance Weller and G. Willow Wilson.

## Thank You!

**First Edition Sponsors:** Bill & Melinda Gates Foundation, HarperCollins Publishers, K&L Gates, Puget Sound Energy, Kari Glover & Thad Alston, Kim & Eric Moen and Berta Seltzer. **Best Seller Sponsors:** Bellevue Endodontic Associates, The Boeing Company, Crossroads Bellevue, Davis Wright Tremaine, Deloitte, MacDonald-Miller Facility Solutions, Pacific Northwest Writers Association, Resources Global Professionals, Leonard & Patricia Shapiro, Technical Furniture Systems and TokuSaku Consulting. **Book Lover Sponsors:** Kira Druyan & Joel Walker, Bill & Peg Keough. **Starred Review Sponsors:** Copiers Northwest, EBSCO Information Services, Garvey Schubert Barer, Lyngsoe Systems, Midwest Tape, Miller Hull Partnership and URS. **Book Club Selection Sponsors:** MicroK12, Overdrive, Partners West Book Distributing, Sasquatch Books, Weinstein A|U and Patricia H. Anderson/Merrill Lynch Wealth Management.

Thank you to Costco Wholesale for engaging our keynote speaker and to Third Place Books for coordinating the book sale and donating a portion of the proceeds to the event.

Wine generously underwritten by Chateau Ste Michelle, Domaine Ste Michelle, J. Bookwalter Winery and Wine Outlet. Additional support provided by Ballard Outdoor, Brugge Chocolates, ImageSource, Cardinal Media, Elliott Bay Productions and *Seattle Met*.

Watch the program at [www.kclsfoundation.org/literarylions](http://www.kclsfoundation.org/literarylions).



KCLS Director Bill Ptacek, Emcee Nancy Pearl, KCLS Foundation President Kari Glover, Keynote Author Dennis Lehane and KCLS Foundation Director Jeanne Thorsen



Authors Mike Lawson and Richelle Mead

Author Josh Henderson



# a place at the table

Inspiring Cooks. Nourishing Communities.

KCLS invites everyone to find A Place at the Table! This year-long series is stocked with fresh ideas about food, cooking, nutrition and growing and

using locally produced food. Find programs on food preparation and planning skills, online classes and videos and great books to read with food as the theme. Create a nourishing table at home and by bringing non-perishable food items to the library to be distributed to local food banks. Sponsored by the King County Library System Foundation and local partners. [www.kcls.org/cooks](http://www.kcls.org/cooks)

## Shop and Support the KCLS Foundation

**Thriftbooks.com** – Buy used books online from Thriftbooks, a local company that sells our ‘weeded’ library titles. [www.thriftbooks.com/kclsf](http://www.thriftbooks.com/kclsf) to see our inventory.

**Bartells Drugs** – Sign up for an eScrip “B” Caring card at any Bartells Drugs and designate the KCLS Foundation as the recipient. Each time you shop and present your card, a percentage of your purchase price will be donated to the KCLS Foundation. [www.escrip.com/Bcaringcard](http://www.escrip.com/Bcaringcard)

**iGive.com** – Up to 26% of purchase price at more than 900 stores can be designated for the KCLS Foundation. [www.igive.com](http://www.igive.com)



The Seattle Foundation

# give BIG

**MAY 15** 2013

The Seattle Foundation’s third annual GiveBIG one-day online give-a-thon is bigger and better! Mark your calendars to donate to the KCLS Foundation on May 15 through The Seattle Foundation’s web site and your donation will be s-t-r-e-t-c-h-e-d!

Community sponsors and The Seattle Foundation have created a “stretch pool” of funds that helps each and every donation go farther. The more supporters donate to the KCLS Foundation, the bigger our share of the stretch pool.

More information will be coming via email and Facebook. “Like” the KCLS Foundation Facebook page and/or send us your email address for updates.

Contact Claire Wilkinson at [cwilkins@kcls.org](mailto:cwilkins@kcls.org) or 425.369.3448 if you have questions.

# 20 Years Celebrating Readers, Writers and Libraries!



*Authors Mackenzie Bezos  
and Jessi Bloom*



*Author Tom Douglas*



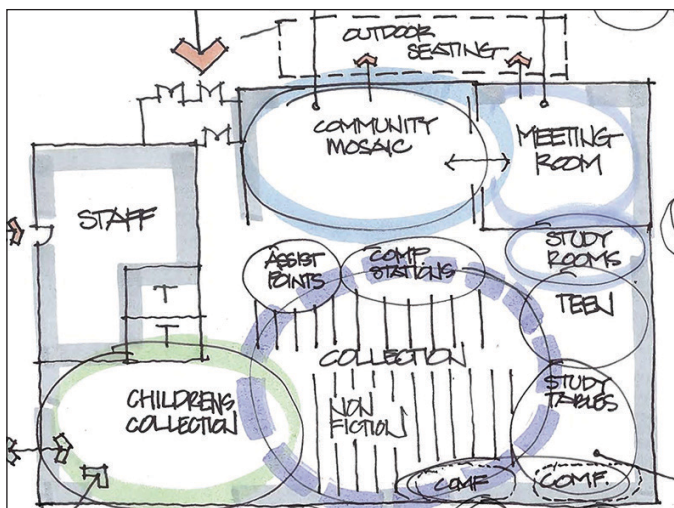
*Author Maria Semple*



*Gala Chair Kim Moen  
and Eric Moen*

# Creating a COMMUNITY MOSAIC

## in the New Tukwila Library



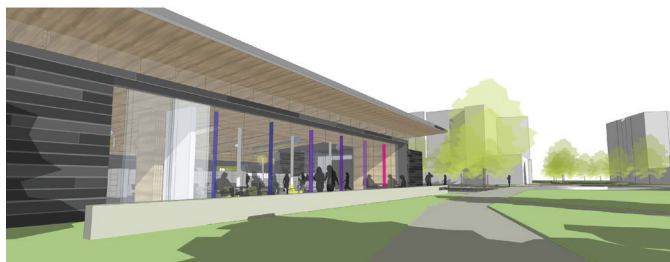
The KCLS Foundation is raising \$1 million to create a Community Mosaic – a performance space, gathering place, community living room and learning hub – in the new Tukwila Library.

The Library System has the funding to build an 8,000 square foot library on the Tukwila Village site along International Boulevard. The KCLS Foundation Board of Directors enthusiastically committed to seeking support to add 2,000 square feet for the Community Mosaic space, which will expand the building to a total of 10,000 square feet. The new building will replace the small, busy and crowded Foster Library.

Known as the Ellis Island of the Northwest and home to the most diverse school district in the United States, Tukwila is a unique international community. The Community Mosaic open space will be a stage for cultural programs, site for technology training and venue for civic gatherings, festivals and numerous activities.

Join us in this extraordinary opportunity and help create a Community Mosaic – a welcoming space to inspire all residents to discover new ideas, find vital resources, expand learning and connect with neighbors.

For more information, including naming opportunities, contact Cindy Sharek, Director of Major and Planned Gifts at [cjsharek@kcls.org](mailto:cjsharek@kcls.org) or 425.369.3225. More information on the Community Mosaic capital campaign – including a video – is available at [www.kclsfoundation.org/tukwila](http://www.kclsfoundation.org/tukwila).



King County  
Library System  
Foundation

Literacy  
Learning  
Libraries



Name \_\_\_\_\_  
Address \_\_\_\_\_  
City \_\_\_\_\_ State \_\_\_\_\_ Zip \_\_\_\_\_  
Email \_\_\_\_\_ Phone \_\_\_\_\_

**Fund:** ☐ Unrestricted ☐ Creating a Community Mosaic in the Tukwila Library Capital Campaign

### Method of Payment

Please find my check in the amount of \$ \_\_\_\_\_ enclosed (Make payable to KCLS Foundation).

I wish to make a pledge in the amount of \$ \_\_\_\_\_. Please bill me ☐ monthly ☐ quarterly ☐ other \_\_\_\_\_.

I wish to charge my contribution of \$ \_\_\_\_\_ on my credit card.

Card number: \_\_\_\_\_ Expiration date: \_\_\_\_\_

Name on card: \_\_\_\_\_

Signature: \_\_\_\_\_

### Matching Gift Information

☐ My/my spouse's employer will match this gift. I will submit a matching gift form to KCLS Foundation.

Company Name \_\_\_\_\_

**Naming opportunities are available. For more information, please contact Cindy Sharek at 425-369-3225 or [cjsharek@kcls.org](mailto:cjsharek@kcls.org)**  
King County Library System Foundation • 960 Newport Way NW • Issaquah, WA 98027 • 425-369-3448 • [www.kclsfoundation.org](http://www.kclsfoundation.org)